

accident & emergency department

case study / Wexham Park / Procure 21+ Framework



projects

9,000sq.m, new build emergency facility...

| | |
|----------------------|-----------------------------|
| SITE REFERENCE: | Emergency Department |
| SITE LOCATION: | Wexham Park, Slough |
| BUSINESS SECTOR: | Health |
| CONSTRUCTION PERIOD: | 56 weeks |



Scope of works:

- New LV panel.
- Fire Alarm System.
- Security system including CCTV, access control & intercom.
- Nurse call system.
- CT scanner.
- X-Ray rooms (x2).
- Medical trunking.
- Medical earthing.
- New lighting protection system on the new build section.
- New LED lighting & emergency lighting.
- Lighting controls and emergency self-testing facilities.
- Air handling units and HVAC system components (x8).
- Chillers (x2).
- Split system air conditioning units (x9).
- Installation of new LTHW radiators.
- FCUs & heater batteries fed from district CHP plant.
- New domestic pipework.
- BMS, cabling & field devices.
- Medical Gases including Entonox.
- AGSS, Oxygen, Medical Air.
- Office Area.

Project description

Integral are proud to have successfully delivered the commissioning and installation of mechanical, electrical, plumbing and heating services, project management and BIM coordination of this new build, 9000 sq.m Emergency Department scheme, at Wexham Park Hospital.

Working in partnership with the NHS and Kier Group under the Procure 21+ scheme, this is one of the first in the country to model an ED from the United States.

As well as various departments including an Isolation suite, Decontamination suite, Resus Bays, CT Scanner, X-ray rooms, Majors, Minors, Imaging & Paediatrics, there are 36 bedrooms and 48 ward beds all with en-suites, plus a floor of office space. The new facility interfaces with the existing surrounding buildings infrastructure, including district heating, fire alarm, security & pneumatic tube.

The project was delivered using off site pre-fabricated corridor modules containing all the primary M&E services runs, this had a huge benefit in reducing the number of man hours on site, working at height along with reducing the overall installation programme.

Wexham's new ED is one-third larger than the previous facility and thanks to specialist medical and assessment units, will ensure patients are assessed, diagnosed and treated swiftly, meaning many now won't need to be admitted to hospital.

Contact: chris.argent@integral.co.uk
Integral Projects: **07764 803209**

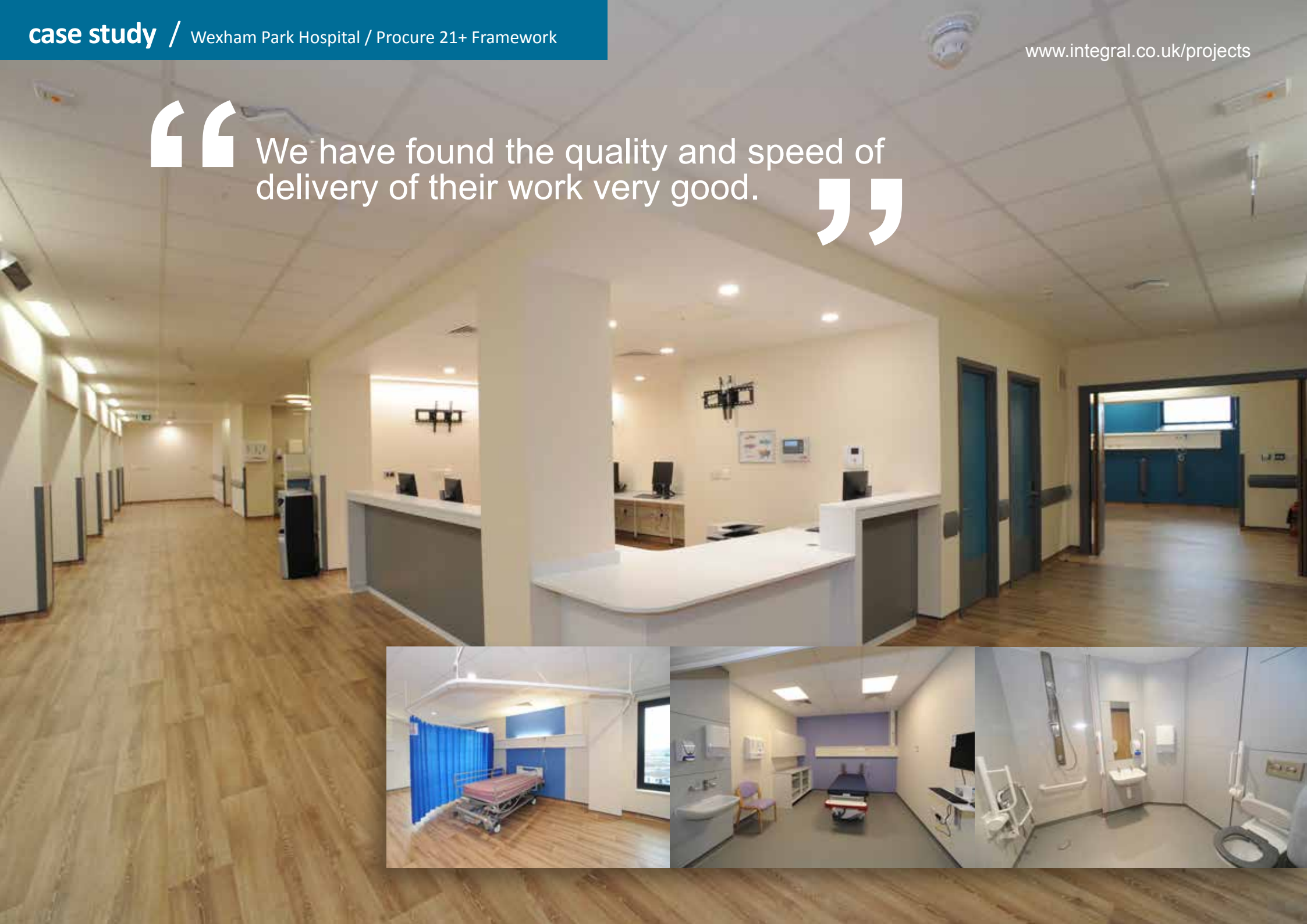


“

It has been a joy to work with Integral on this project. They quickly respond to questions in a way in which non-technical colleagues can understand.

”

“ We have found the quality and speed of delivery of their work very good. ”







projects

south west
south east
eastern
northern

| | |
|--------------|------------------------------------------------------------------------------|
| 07764 803209 | chris.argent@integral.co.uk |
| 07764 803209 | chris.argent@integral.co.uk |
| 07739 874700 | mark.dixon@integral.co.uk |
| 07802 686280 | roy.nixon@integral.co.uk |

Head office: Integral UK Ltd. 1290 Aztec West, Almondsbury, Bristol BS32 4SG

Registered Office

JLL, 30 Warwick Street, London W1B 5NH

Company Registration No. 5307588



INTEGRAL

projects